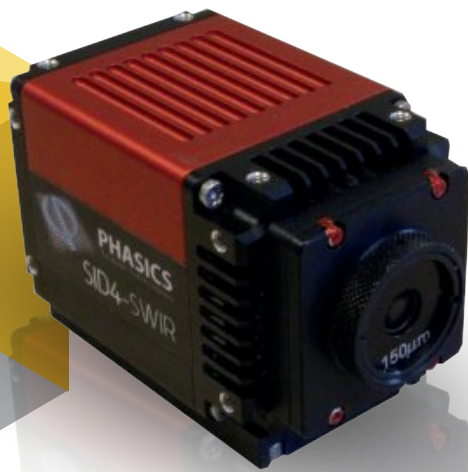


# SID4

for metrology &  
high energy physics

**PHASICS**  
The phase control company

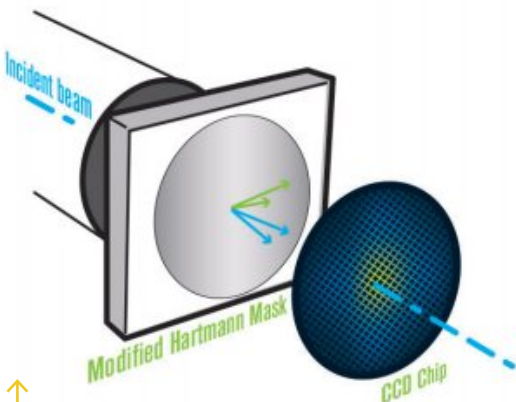




## "ONE SINGLE VERSATILE WAVEFRONT SENSOR..."

PHASICS® wavefront sensors stand out for both their unrivalled **high resolution** and their **ease of use**. As they cover beam testing, adaptive optics and plasma characterization, PHASICS instruments offer full **versatility** to engineers and researchers in high power laser facilities (Petawatt, Terawatt...).

### EXCLUSIVE TECHNOLOGY: 4-WAVE LATERAL SHEARING INTERFEROMETRY\*



PHASICS® technology was introduced to overcome the Shack-Hartmann sensor limitations, especially resolution. This ultra-high resolution enables accurate wavefront measurement for robust calculations of beam parameters.

#### 1 HIGH RESOLUTION

- Up to 120 000 measurement points
- High repeatability
- Robust calculations

#### 2 HIGH DYNAMIC RANGE

- Measurement of strong aberrations

#### 3 DIRECT MEASUREMENT OF DIVERGING BEAM

- Easy set-up & alignment
- High NA with no relay lens
- The after last parabola wavefront measurement

#### 4 SELF REFERENCED

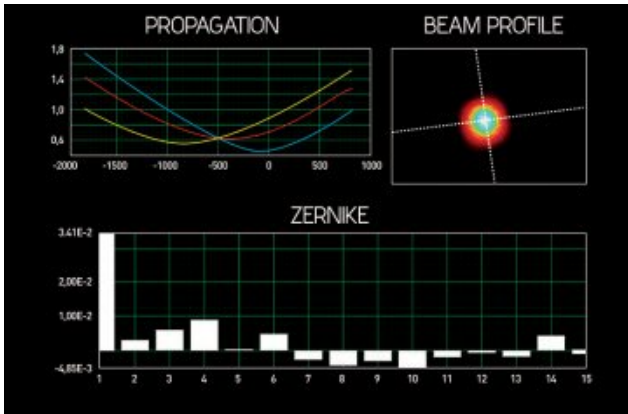
- Compact
- Insensitive to vibration

#### 5 ACHROMATIC

- Compatible with broadband sources: Femtosecond laser, white light or LED
- Cost-effective multi-wavelength solution

# ...TO MEET ALL YOUR CHALLENGES

## I - ACCURATE BEAM CHARACTERIZATION AT ANY POINT OF THE LASER CHAIN



- High resolution of both phase & intensity for robust calculations of all laser beam parameters
- Set-up with no relay lens at any point of the laser chain
- Easy parabola and optics alignment

**Aberrations:** Zernike, Legendre

**Beam propagation:**  $M^2$  (ISO 11146), waist, Rayleigh length, divergence

**PSF:** Strehl ratio, encircled energy

**Advanced measurements:** Annular or rectangular pupils, multiple pupils, piston, tilt

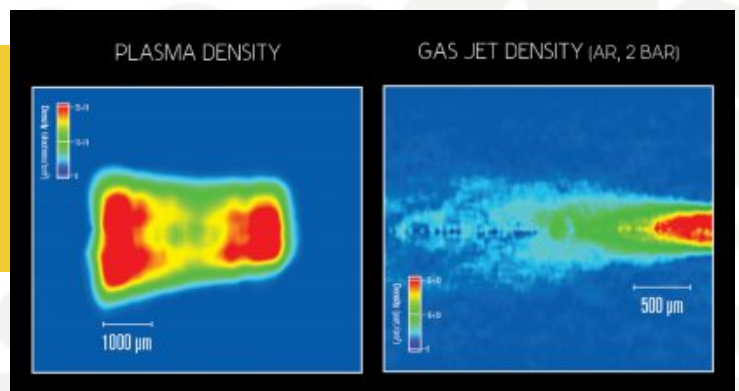
**Beam profile:** Energy distribution, intensity centroid

## II - GAS & PLASMA DENSITY HIGH SENSITIVITY & REPEATABLE MEASUREMENT

- High sensitivity (8x lower noise than Mach-Zender interferometer)
- Accurate at low gas pressure
- Repeatable shot-to-shot measurements to compare homogeneity (nozzle selection, laser pulse illumination...)

### EASY & COST-EFFECTIVE SET-UP

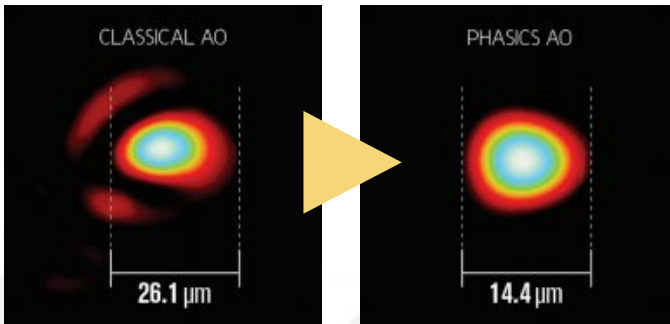
- No reference arm
- Any probe source :  
fs-laser, LED, halogen...



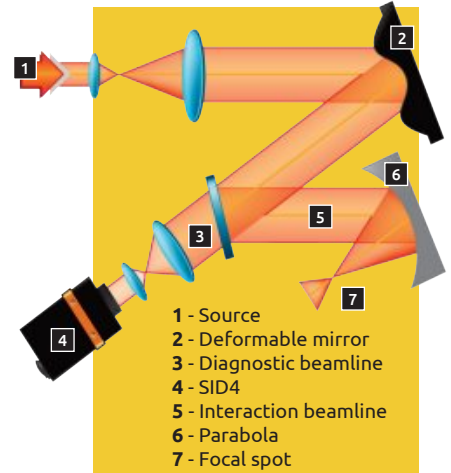
# IN LASER EXPERIMENTS"

## III - ADVANCED ADAPTIVE OPTICS WITH ANY DEFORMABLE MIRROR

- Telescope aberrations removal
- 3D dynamic pointing



↑ Correction after the last parabola without any additional device to achieve the best possible focal spot



- 1 - Source
- 2 - Deformable mirror
- 3 - Diagnostic beamline
- 4 - SID4
- 5 - Interaction beamline
- 6 - Parabola
- 7 - Focal spot

PHASICS® expert team provides insightful support for deformable mirror selection: technology, size, number of actuators, deformable optics and wavefront sensor location, angle of incidence, coating, vacuum...

## IV - OPTICS ALIGNMENT & TESTING

EASY DOUBLE PASS MEASUREMENT WITH R-CUBE INTEGRATED ILLUMINATION ADD-ON



- Large mirror measurement in the laser chain
- Telescope aberrations removal
- Lens test and alignment in all the laser chain
- Diagnostic beamline calibration

# HIGH RESOLUTION WAVEFRONT SENSORS

## SID4 RANGE FROM UV TO IR



	Spectral range	Aperture dimension (mm <sup>2</sup> )	Spatial resolution	Phase sampling (pixels)	Phase accuracy (Absolute)	Phase resolution	Vacuum compatibility
UV	250-400 nm	7.4 x 7.4	29.6 μm	250 x 250	10 nm RMS	2 nm RMS	-
SID4 $\nu$	400-1100 nm	4.73 x 3.55	29.6 μm	160 x 120	15 nm RMS	2 nm RMS	> 10 <sup>-6</sup> mbar
SID4	400-1100 nm	4.73 x 3.55	29.6 μm	160 x 120	10 nm RMS	2 nm RMS	-
SID4-HR	400-1100 nm	11.84 x 8.88	29.6 μm	400 x 300	15 nm RMS	2 nm RMS	-
NIR	1.5-1.6 μm	4.73 x 3.55	29.6 μm	160 x 120	15 nm RMS	11 nm RMS	-
SWIR	0.9-1.7 μm	9.6 x 7.68	120 μm	80 x 64	15 nm RMS	2 nm RMS	-
SWIR-HR	0.9-1.7 μm	9.6 x 7.68	60 μm	160 x 128	15 nm RMS	2 nm RMS	-
eSWIR	1.0-2.35 μm	9.6 x 7.68	120 μm	80 x 64	<40 nm RMS*	<6 nm RMS*	-
DWIR	3-5 μm & 8-14 μm	10.08 x 8.16	68 μm	160 x 120	75 nm RMS	25 nm RMS	-
LWIR	8-14 μm	16 x 12	100 μm	160 x 120	75 nm RMS	25 nm RMS	-

\* For coherent sources



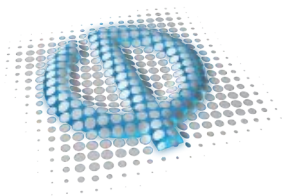
## WITH ANY DEFORMABLE MIRROR

	High Power Laser			Imaging correction	Imaging correction & beam shaping
Technology	Piezo electric (small diameter)	Piezo electric (large diameter)	Mechanical of the latest generation (stepper motor)	Membrane	SLM
Number of actuators	up to 36	up to 150	up to 60	up to 80	800 x 800 or 1080 x 1920
Diameter	15-25 mm	300-400 mm	22-500 mm	10-30 mm	7-16 mm
Damage threshold	Very high (on-demand coating)			High	Medium
Loop speed	5-10 Hz	5-10 Hz	1 Hz	5-10 Hz	5-10 Hz

## DEDICATED SOFTWARE PACKAGES

- SID4 **Density module** for plasma diagnosis
- **OASys module** for adaptive optics
- **SID4** for beam analysis





# PHASICS

The phase control company

## PHASICS S.A.

Bâtiment Explorer - Espace Technologique  
Route de l'Orme des Merisiers, 91190 Saint-Aubin, FRANCE  
Tel : +33(0)1 80 75 06 33  
contact@phasics.fr

## PHASICS CORP.

600 California Street - 11th Floor  
San Francisco CA 94108, USA  
Tel : +1 415 610 9741  
contact@phasics.com  
www.phasics.com



光技術をサポートする  
**株式会社オプトサイエンス**

<https://www.optoscience.com>

東京本社 〒160-0014 東京都新宿区内藤町1番地 内藤町ビルディング TEL:03-3356-1064  
大阪営業所 〒532-0011 大阪市淀川区西中島7-7-2 新大阪ビル西館 TEL:06-6305-2064  
名古屋営業所 〒450-0002 名古屋市中村区名駅2-37-21 東海ソフトビル TEL:052-569-6064

E-mail : [info@optoscience.com](mailto:info@optoscience.com)