



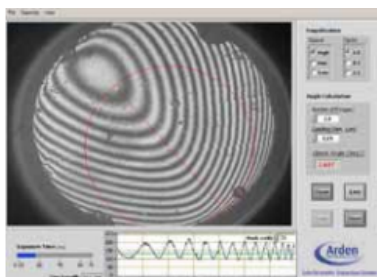
The VFI is an interferometric inspection system specifically designed for checking the surface quality and flatness of your cleaved, polished or lensed fibers. The VFI interferometer has proved itself in Research, Production and QA over and over and the feedback we get from users indicates that they value these features -

1) Superb optical quality - the VFI will give you high quality images of the ends of optical fibers to enable you to estimate their quality and flatness. Using a front panel switch you can select the two modes of operation – inspect and fringe - so

you can check the flatness and the end quality of your cleaved, polished or lensed fiber end with one fiber insertion. This means reduced testing time.

We pride ourselves on the crisp end-face images which show every defect and on the high contrast fringe patterns which make it easy to estimate end angles. The 5Mpixel camera in the VFI helps to show every detail and gives ample digital zoom capability.

2) Purpose designed fiber handling - the range and flexibility of the fiber handling is crucial to the concept of the VFI. Arden's own fiber holders make the VFI easy to use and accurate; our third party adaptor plates help you integrate VFI inspection and interferometry into your critical cleaving and polishing operations. Arden's holders can take fibers with diameters from 125µm to 1200µm, so you won't need multiple pieces of equipment to see all your fiber types properly.



干渉縞からカッティング角度を測定

3) Flexible software - the VFI comes with an efficient software package which enables you to grab, save, and print images. This gives you the ability to record vital data and produce QA reports for internal use or to supply to customers. The report generator enables users to include up to 20 cleave images in one report along with comments. Other features include - intensity line profile, intensity histogram, auto-optimisation of intensity, end angle estimation, psuedo-color rendering, review stored images.

All our software is written in-house by Arden's engineers. Arden has a track record of adding software features suggested by customers and we will continue to do that so you can be sure that our products will stay up-to-date with the latest standards and algorithms.

### Features and benefits

- ▶ Accepts 125 to 1200µm fiber diameters
- ▶ 5Mpixel camera gives x6 digital zoom
- ▶ Arden, Vytran, Fujikura and PK holders
- ▶ End angle estimation
- ▶ Inspect and Fringe modes
- ▶ Flat and angled ends
- ▶ User calibration facility

### Applications

- ▶ Precision cleaver manufacture
- ▶ Cleaver maintenance
- ▶ Laser manufacture
- ▶ Medical device manufacturing
- ▶ Fiber R&D
- ▶ Development and testing of angled cleaves and cleavers
- ▶ Device pigtailling

## Technical Specification

	VFI-1200	VFI -200
Field of View	1200 $\mu\text{m}$ maximum with x1.5, x2, x3 and x6 digital zoom	200 $\mu\text{m}$
Dims (mm)	240W x 240D x 90H	240W x 240D x 90H
Weight (kg)	2.0	2.0
Power supply	12v in-line power supply	12v in-line power supply
PC connection	Hi-Speed USB 2.0	USB 2.0
Resolution	Maximum Resolution 1920x1920 pixels	1280 x 1024 pixels
Image format	8-bit JPG	8-bit JPG
Accuracy	< 0.1 °	< 0.1 °

## Ordering Information

VFI-1200	Interferometric inspection system for fibers with diameters from 125 to 1200 $\mu\text{m}$ . Includes VFI-1200 optical unit ; CD containing PC software ;USB cable ;Power Supply ;User manual ; Tools. Computer and fiber holders not included.
VFI-200	Interferometric inspection system for fibers with diameters of 125 $\mu\text{m}$ . Includes VFI-200 optical unit ; VF-H0 fiber holder, CD containing PC software ;USB cable ;Power Supply ;User manual ; Tools. Computer not included.

**Also required** - these items must be ordered separately

- Desktop or laptop computer
- Fiber holders - see below

### Fiber holders



Arden's own holders are designed for one job only - to accurately and conveniently hold fibers for interferometric end-face measurements. They hold the fiber close to the tip in a precision Vee-groove so there is no danger of fibers curling. The fiber is held gently but securely using a removable magnetic strip. Arden holders are machined from stainless steel so precisely that the VFI will hold its calibration even when switching from holder to holder.

### Angled cleave holders

We also provide holders for measuring angled cleaves. Contact us for more details about these holders.

### Other fiber holders

Whilst Arden's own holders are purpose-made for the job, we recognise that often the VFI is used in conjunction with specialist precision splicing and cleaving equipment. So by using adaptor plates the VFI can accommodate industry standard fiber holders from Vytran and Fujikura.

Please note - using third party fiber holders can help your work flow BUT they are designed to work with cleavers and splicers not interferometers. Therefore you will not be able to self-calibrate the VFI using these holders. If you want to check the calibration of the VFI you will need to use Arden's own holders.

If you want to use the VFI with another type of holder please contact us as our engineers may well be able to help design an adaptor plate to suit your requirement.

### After sales service

Contact Arden Photonics for information on our comprehensive packages (extended warranties, calibration programs, software upgrades, etc.) and per-incident services (repair, calibration, etc.)

## For world-wide sales contact - Arden Photonics Ltd

Royston House, 267 Cranmore Blvd, Shirley, Solihull B90 4QT UK

Tel +44 121 733 7721 [sales@ardenphotonics.com](mailto:sales@ardenphotonics.com) [www.ardenphotonics.com](http://www.ardenphotonics.com)