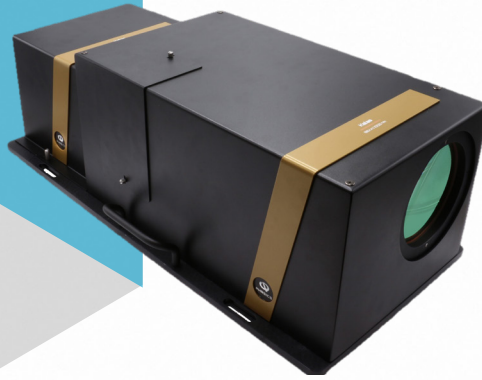




PHASICS
the phase control company



KALAS

LARGE BEAM ANALYSIS WITH SID4

Kalas is a modular solution that integrates all the necessary components to characterize **beams of up to 127mm (5")** with **high accuracy** (< 15 nm RMS).

Embedding all the advantages of PHASICS technology, Kalas enables to easily perform **the full characterization of your beam** under test. In a **single-shot**, Kalas measures wavefront and intensity, and calculates **divergence, waist dimensions, M^2** , and all the relevant information to fully qualify your beam.

In addition, **all the modules are standalone**, including the SID4 wavefront sensor.

KEY FEATURES



Accuracy
< 15 nm RMS



Beam diameter up
to 127 mm



Divergence,
 M^2 & WFE



All the modules are
standalone



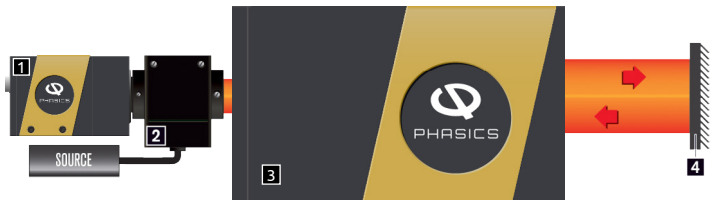
Source wavelength
customized on demand



Insensitive to
vibration

HOW IT WORKS: 2 STEPS

→ Calibrate the aberrations from the measurement system



→ Characterize your beam



- 1 SID4 Wavefront sensor
 - 2 R-Cube Illumination module
 - 3 Beam expander
 - 4 Reference flat mirror
 - 5 Incident beam under test
- Kalas modules

SPECIFICATIONS

Compatibility	SID4 / SID4-HR / SID4-SWIR / SID4-SWIR-HR
Entrance pupil diameter ¹	8 mm / 15 mm / 25.4 mm / 50.8 mm / 101.6 mm / 127 mm
Source wavelength ²	405 / 530 / 625 / 740 / 780 / 810 / 850 / 940 / 1050 / 1550 nm
Accuracy	< 15 nm RMS
Weight ³	15 kg
Dimensions ³	450 x 350 x 250 mm ³

¹ Larger pupil available on demand

² Other source available on demand

³ For the 127 mm version

記載内容および画像の転載、複製、加工などは禁止です。また、記載内容は予告なく変更することがあります。ご了承ください。