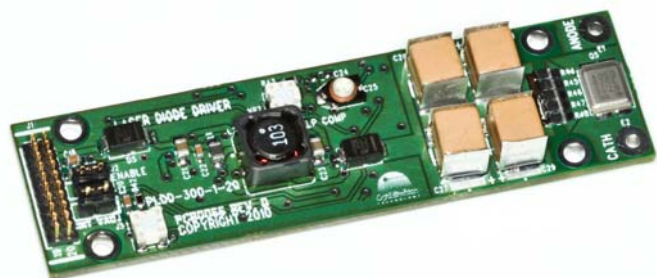


DATA SHEET



- **Output Current up to 300 A**
- **Up to 5 μ s pulse width**
- **Rise-time of <500 ns**
- **Up to 20 PPS**
- **Current monitor output 1 volt/100 amps**
- **Optimized for driving a single laser diode bar**
- **Only 12 grams**

The PLDD-300-1-20 is an ultra-miniature, short pulse, laser diode driver for driving a single laser diode bar to 300 amps of peak current. Due to the compact size and weight (only 12 grams), this unit is well suited for man-portable and airborne applications.

The magnitude of the output current is controlled either by an on-board potentiometer or a user supplied DC voltage. The input trigger signal controls the pulsewidth.

The optional Universal Interface Board (UIB-01) allows the user easy access to all control pins. Commonly used signals on the UIB-01 are available through BNC connections such as the input trigger and the current monitor which allows the user a real time view of the current.

The PLDD-300-1-20 can be powered by a +12 volt supply. Contact factory for recommendations on battery operation.

OMNIPULSE TECHNOLOGY

6355 Nancy Ridge Drive, San Diego, CA 92121

Tel: (858) 452-7700 • Fax: (858) 452-8788

Email: sales@omnipulsetechnology.com • <http://www.omnipulsetechnology.com>



光技術をサポートする

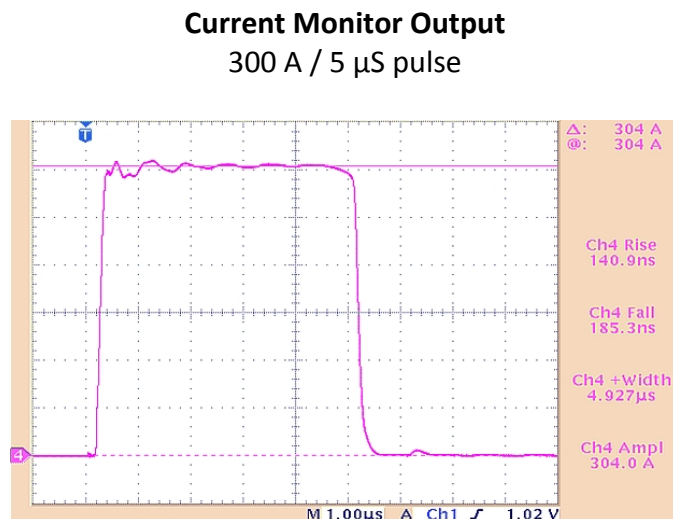
株式会社オプトサイエンス

<http://www.optoscience.com>

東京本社 〒160-0014 東京都新宿区内藤町1番地 内藤町ビルディング
TEL: 03 (3356) 1064 FAX: 03 (3356) 3466 E-mail: info@optoscience.com
大阪支店 〒532-0011 大阪市淀川区西中島7-7-2 新大阪ビル西館
TEL: 06 (6305) 2064 FAX: 06 (6305) 1030 E-mail: osk@optoscience.com
名古屋営業所 〒450-0002 名古屋市中村区名駅2-37-21 東海ソフトビル
TEL: 052 (569) 6064 FAX: 052 (569) 8064 E-mail: ngo@optoscience.com



SPECIFICATIONS*	
Parameter	Value
Pulse Output Current (Load = Single Laser Diode Bar)	
Amplitude Range	0-300 amps
Means of Adjustment	Internal adjustment with potentiometer or user supplied DC voltage (3 volts=300 amps)
Pulse Rise Time	<500 ns typ. (dependent on load impedance)
Pulse Width	up to 5 μ s (set by user supplied input trigger)
Pulse Recurrence Frequency Range	20 PPS at 300 A peak
Compliance Voltage	3 volts (single bar)
Output Connection	PDS-0.75-4-3 stripline (supplied with driver) for optimum performance
Trigger Requirements	
Type	3.3/5 volt CMOS/TTL positive edge. The width of the input signal determines the output pulsewidth.
Outputs	
Current Monitor	Linear output, 1.00 volt/ 100 amps into >10 kOhm 0.50 volt/100 amps into 50 Ohm
General	
Input Power	+12 V @ 130 mA peak, 45 mA avg. typ..
Dimensions (H X W X D) inches	0.35" X 0.75" X 2.69" (Approximate)



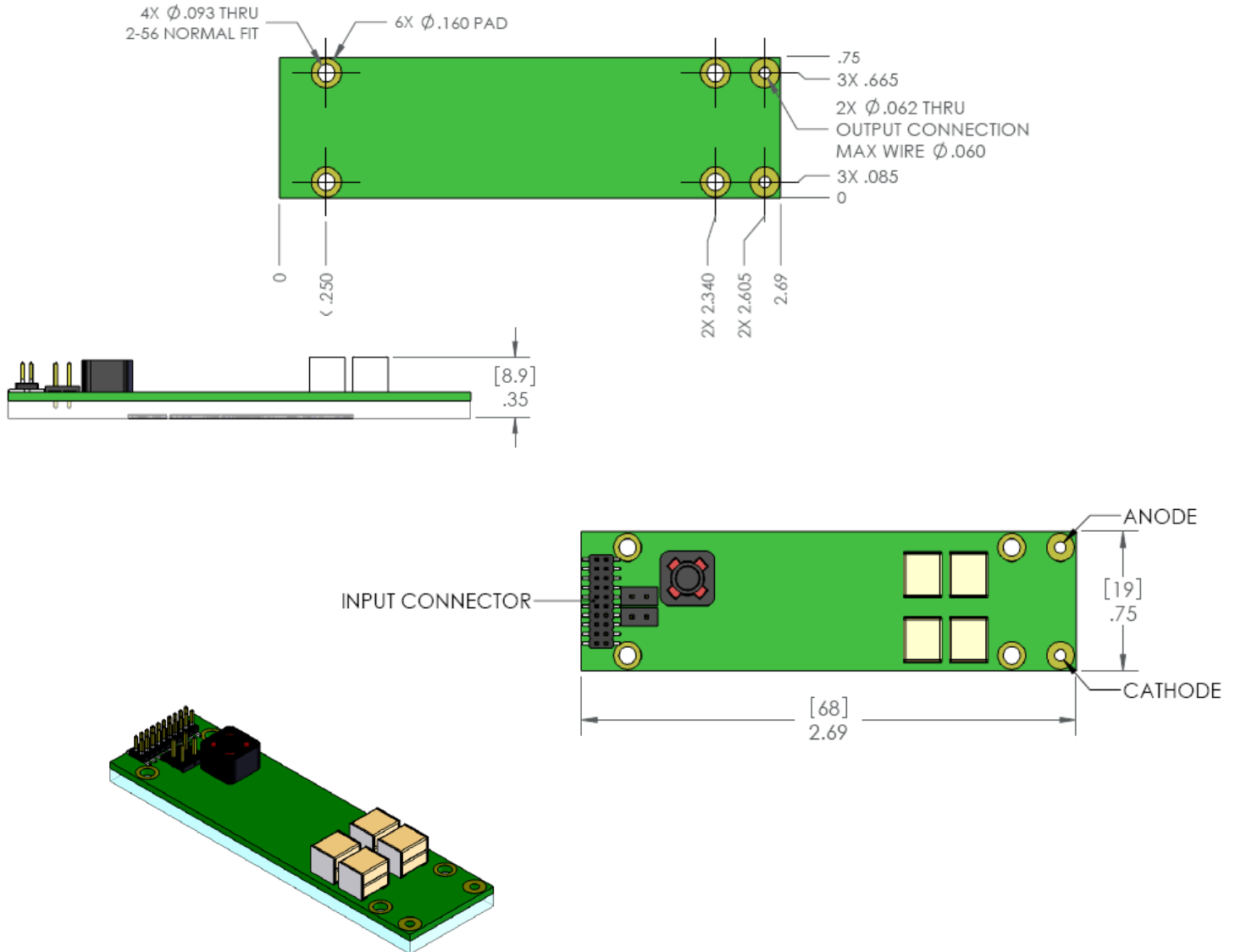
I-mon output
Load is 2 nH & single laser diode.

Warning: Please discharge capacitor before connecting or removing any load

*Specifications are subject to change without notice.

OMNIPULSE TECHNOLOGY
6355 Nancy Ridge Drive, San Diego, CA 92121
Tel: (858) 452-7700 • Fax: (858) 452-8788
Email: sales@omnipulsetechnology.com • <http://www.omnipulsetechnology.com>

Physical Dimensions*



**Dimensions are subject to change without notice.*

OMNIPULSE TECHNOLOGY

6355 Nancy Ridge Drive, San Diego, CA 92121

Tel: (858) 452-7700 • Fax: (858) 452-8788

Email: sales@omnipulsetechnology.com • <http://www.omnipulsetechnology.com>