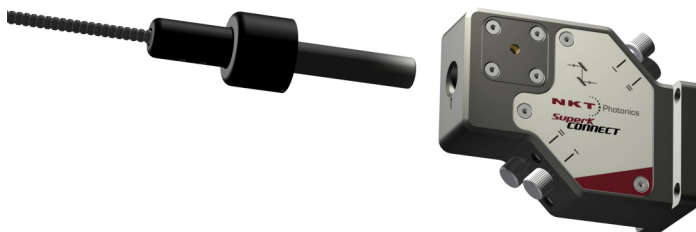


# SuperK Fiber Delivery

Plug and Play fiber delivery for SuperK

- Fiber delivery for all SuperK accessories
- 400-2400 nm coverage
- Guaranteed for performance at high power levels of 500 mW as standard
- Effortless Plug'n'Play design
- FC-PC, FC-APC or collimated output
- Robust manipulator for stable alignment
- The best coupling efficiency available

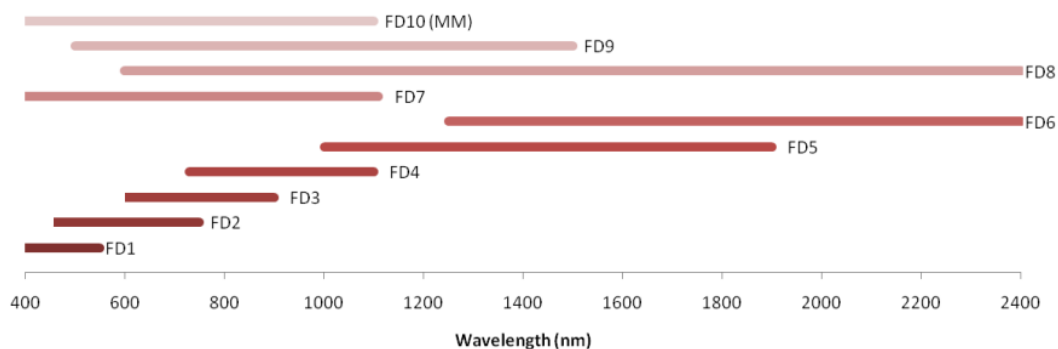


### Fiber Delivery System Specifications

|                                       |                               |
|---------------------------------------|-------------------------------|
| Visible Coupling Efficiency           | > 65%                         |
| Broadband Visible Coupling Efficiency | > 50%                         |
| IR Coupling Efficiency                | > 50%                         |
| Broadband IR coupling efficiency      | > 40%                         |
| Output Fiber Mode                     | Single Mode                   |
| Fiber Connector (Std. SMF)            | VIS, nIR, IR, Ext. IR: FC/APC |
| Fiber Connector (Ultra broadband SMF) | VIS-nIR, VIS-IR: FC/PC        |
| Fiber Length                          | 2m (longer on request)        |
| Polarization                          | PM or non-PM                  |

### Available Configurations

| FD1                     | FD2                     | FD3                     | FD4                     | FD5                      | FD6                    | FD7                             | FD8                    | FD9                    | FD10                  |
|-------------------------|-------------------------|-------------------------|-------------------------|--------------------------|------------------------|---------------------------------|------------------------|------------------------|-----------------------|
| UV-VIS<br>400-550nm     | VIS<br>450-750nm        | VIS-nIR<br>600-900nm    | nIR1<br>730-1100nm      | IR<br>1000-1900nm        | Ext. IR<br>1250-2400nm | VIS-nIR<br>400-1100nm           | VIS - IR<br>600-2400nm | VIS - IR<br>500-1500nm | VIS-nIR<br>400-1100nm |
| SM; PM + non-PM; FC-APC | SM; PM + non-PM; FC-APC | SM; PM + non-PM; FC-APC | SM; PM + non-PM; FC-APC | SM; PM or non-PM; FC-APC | SM; non-PM; FC-APC     | LMA; PM or non-PM, FC-PC or APC | LMA; non-PM, FC-PC     | LMA; non-PM, FC-PC     | MM, FC-PC             |



Specifications are subject to change without notice. Jan 2011 © Copyright NKT Photonics A/S

