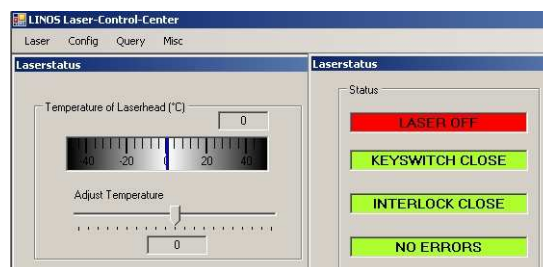


# Data Sheet

## Accessories NANO 250

## Software Package NANO 250

Similar to the remote control, you can use the NANO 250 operating software\* with a PC to adapt the optimal working field of the laser perfectly to the demands of the application at hand, and store the settings.



- Compatibility with all NANO 250 systems
- Output indicator
- Temperature display
- Power and temperature remote control
- Wavelength shift of up to  $\pm 5$  nm
- Programmable output gradients
- Visual representation of measured values
- Storage and reloading of preset values

Equipment supplied:

- Software CD
- USB / MicroUSB cable

\*Compatible with power supply version 2.0 (available from start of 3rd quarter 2009)

