



Gooch & Housego

DEVICE SPECIFICATIONS

MODEL NUMBER:

15260

DOCUMENT NUMBER: 56A14299C

<u>PARAMETER</u>	<u>SPECIFICATION</u>
Interactive Material	TeO ₂
Acoustic Mode	Longitudinal
Operating Wavelength	440 – 850 nm
Window Configuration	AR Coated
Static Transmission	>95 %
Operating Frequency	260 MHz
Diffraction Efficiency	>70 % @ 633nm with Linear, Polarization Perpendicular to Acoustic Propagation or with Random Polarization
Acoustic Aperture Size	0.2 mm
Rise Time	<10 ns
Optical Waist Size to achieve Rise Time	55 μm
Deflection Angle	39 mrad @ 633nm
RF Power Level	< 1 watt
Impedance	50 ohms nominal
VSWR	1.5:1 @ 260MHz
Package:	53B0504
Operating Manual:	51A05436
Acceptance Test Procedure:	42A12764
Acceptance Test Results Form:	52A00623
Recommended Drivers:	
Analog Driver System: 21260-1AS	Digital Driver System: 21260-1DS
Analog Driver Module: 21260-1AM	Digital Driver Module: 21260-1DM

For More Information, Contact: Sales@GoochandHousego.com www.goochandhousego.com

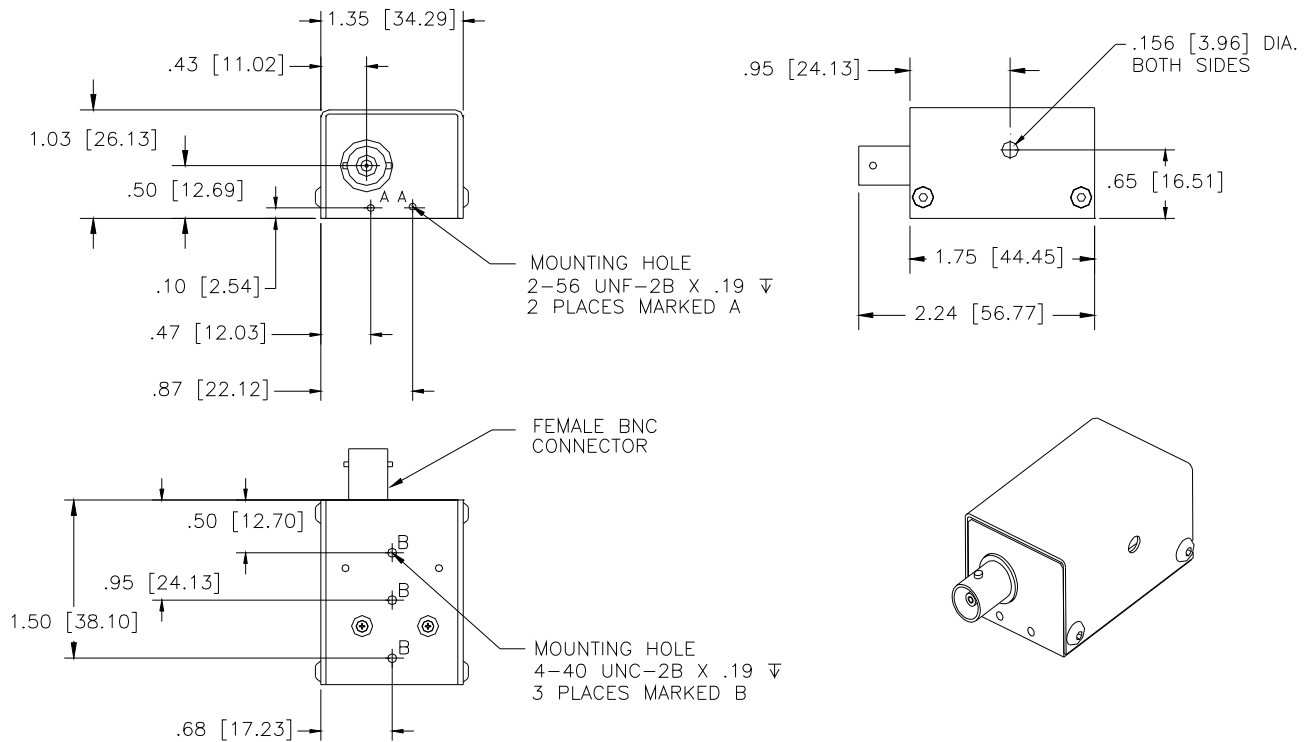
As part of our policy of continuous product improvement we reserve the right to change specifications at any time.



光技術をサポートする
株式会社オプトサイエンス
<http://www.optoscience.com>

東京本社 〒160-0014 東京都新宿区内藤町1番地 内藤町ビルディング
TEL: 03 (3356) 1064 FAX: 03 (3356) 3466 E-mail: info@optoscience.com
大阪支店 〒532-0011 大阪市淀川区西中島7-7-2 新大阪ビル西館
TEL: 06 (6305) 2064 FAX: 06 (6305) 1030 E-mail: osk@optoscience.com
名古屋営業所 〒450-0002 名古屋市中村区名駅2-37-21 東海ソフトビル
TEL: 052 (569) 6064 FAX: 052 (569) 8064 E-mail: ngo@optoscience.com

Mechanical Dimensions:
Dimensions in inches and [mm]



For More Information, Contact: Sales@GoochandHousego.com www.goochandhousego.com

As part of our policy of continuous product improvement we reserve the right to change specifications at any time.



Gooch & Housego

DEVICE SPECIFICATIONS

MODEL NUMBER:

15260-FOA

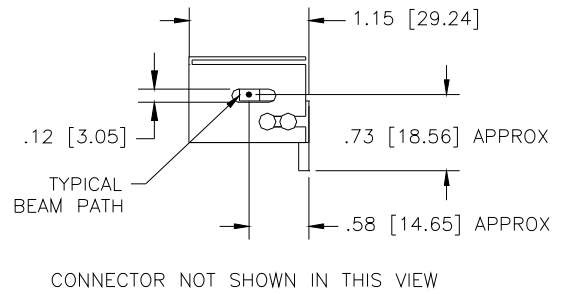
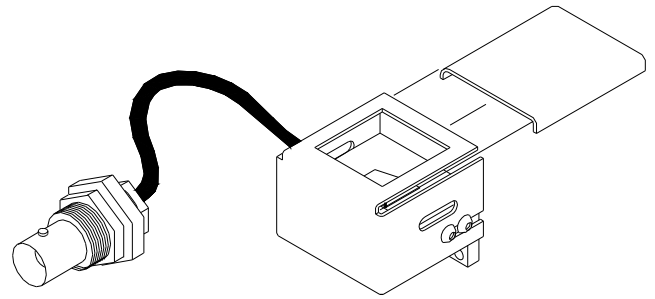
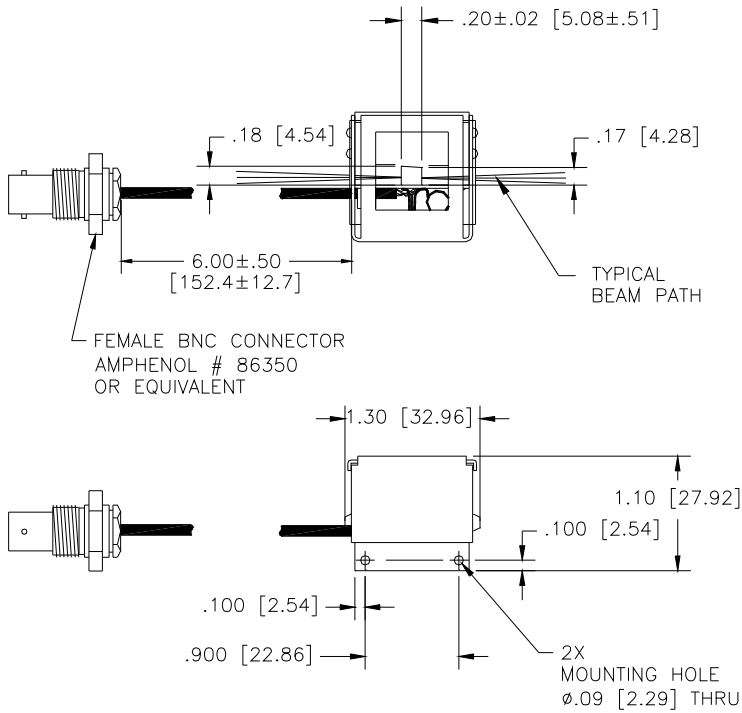
DOCUMENT NUMBER: **56A15409B**

<u>PARAMETER</u>	<u>SPECIFICATION</u>
Interactive Material	TeO ₂
Acoustic Mode	Longitudinal
Operating Wavelength	440 – 850 nm
Window Configuration	AR Coated
Static Transmission	>95 %
Operating Frequency	260 MHz
Diffraction Efficiency	>70 % @ 633 nm with Linear, Polarization Perpendicular to Acoustic Propagation or with Random Polarization
Acoustic Aperture Size	0.2 mm
Rise Time	<10 nsec
Optical Waist Size to achieve Rise Time	55 μm
Deflection Angle	39 mrad @ 633 nm
RF Power Level	< 1 watt
Impedance	50 ohms nominal
VSWR	1.5:1 @ 260 MHz
FOA Package:	53B0957
Operating Manual:	51A17203
Acceptance Test Procedure:	42A12764
Acceptance Test Results Form:	52A00623
Recommended Drivers:	
Analog Driver System: 21260-1AS	Digital Driver System: 21260-1DS
Analog Driver Module: 21260-1AM	Digital Driver Module: 21260-1DM

For More Information, Contact: Sales@GoochandHousego.com www.goochandhousego.com

As part of our policy of continuous product improvement we reserve the right to change specifications at any time.

Mechanical Dimensions:
Dimensions in inches and [mm]



For More Information, Contact: Sales@GoochandHousego.com www.goochandhousego.com

As part of our policy of continuous product improvement we reserve the right to change specifications at any time.



Gooch & Housego

DEVICE SPECIFICATIONS

MODEL NUMBER:

15260-FOA / 71002

DOCUMENT NUMBER: 56A15413A

<u>PARAMETER</u>	<u>SPECIFICATION</u>
Interactive Material	TeO ₂
Acoustic Mode	Longitudinal
Operating Wavelength	440 – 850 nm
Window Configuration	AR Coated
Static Transmission	>95 %
Operating Frequency	260 MHz
Diffraction Efficiency	>70 % @ 633 nm with Linear, Polarization Perpendicular to Acoustic Propagation or with Random Polarization
Acoustic Aperture Size	0.2 mm
Rise Time	<10 nsec
Optical Waist Size to achieve Rise Time	0.055 mm
Deflection Angle	39 mrad @ 633 nm
RF Power Level	< 1 watt
Impedance	50 ohms nominal
VSWR	1.5:1 @ 260 MHz
Package Assembly: Mount, Optics and Modulator:	53D00314
FOA Modulator Package:	53B0957
Operating Manual:	51A05371
Acceptance Test Procedure:	42A15345
Acceptance Test Results Form:	52A15346
Recommended Drivers:	
Analog Driver System: 21260-1AS	Digital Driver System: 21260-1DS
Analog Driver Module: 21260-1AM	Digital Driver Module: 21260-1DM

For More Information, Contact: Sales@GoochandHousego.com www.goochandhousego.com

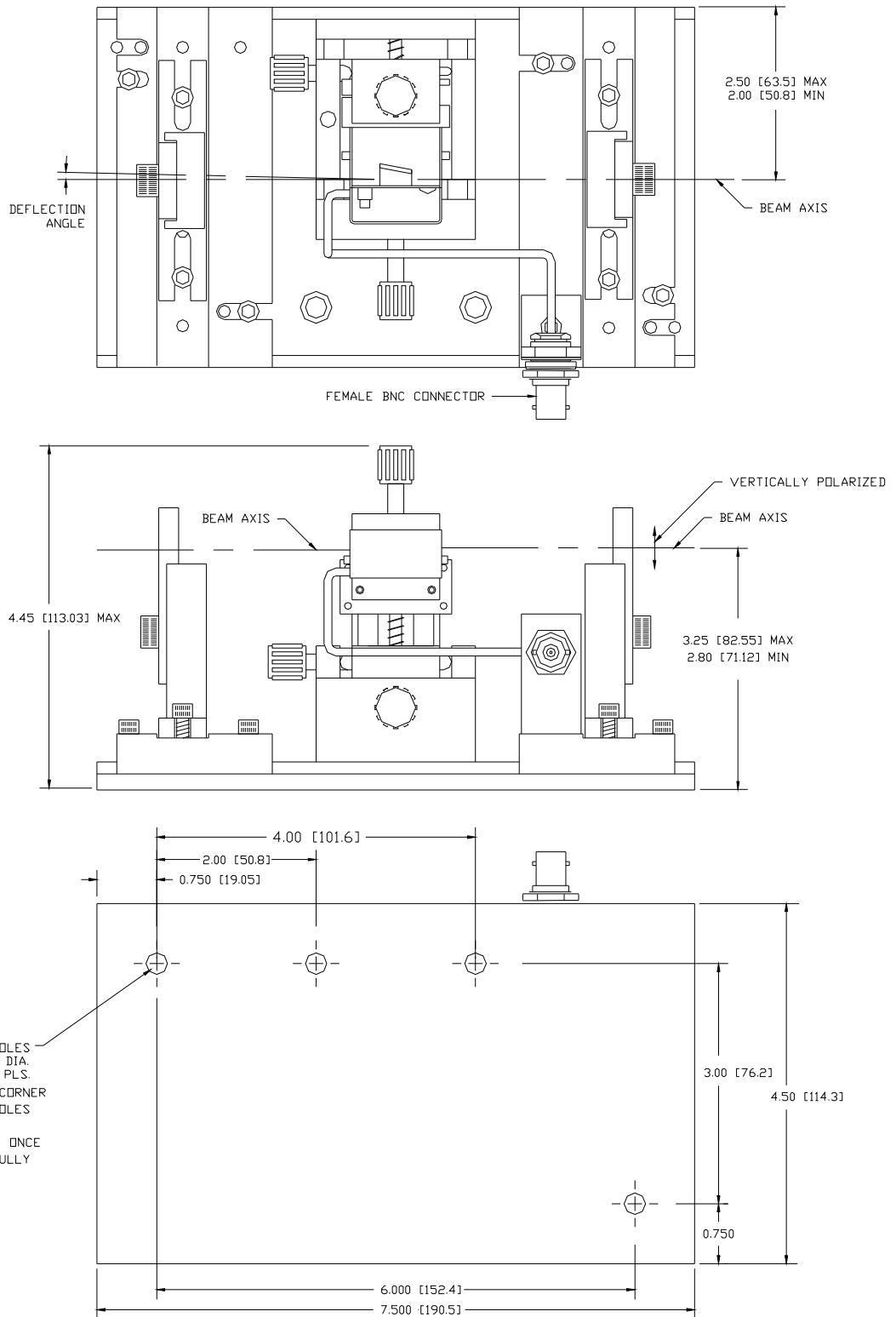
As part of our policy of continuous product improvement we reserve the right to change specifications at any time.

Mechanical Dimensions:

Dimensions in inches and [mm]



Package Assembly: Mount, Optics and Modulator

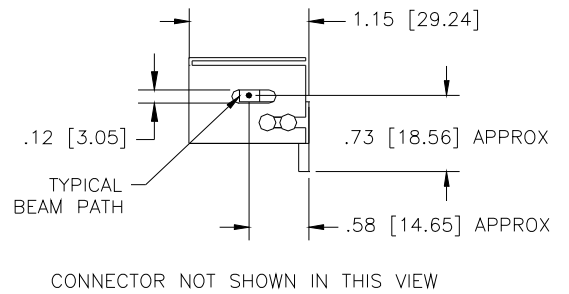
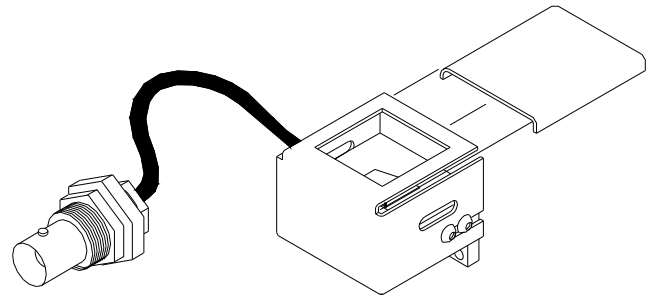
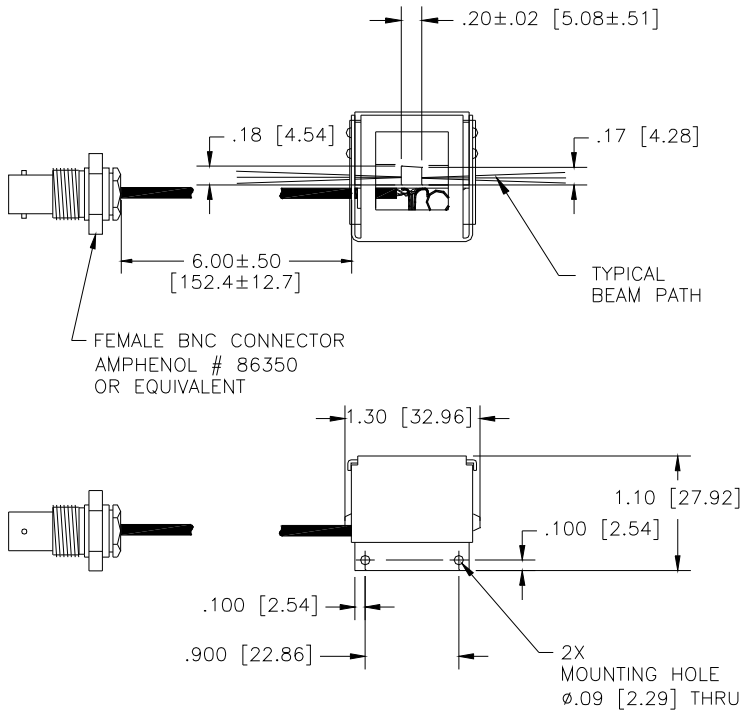


For More Information, Contact: Sales@GoochandHousego.com www.goochandhousego.com

As part of our policy of continuous product improvement we reserve the right to change specifications at any time.

Mechanical Dimensions:
Dimensions in inches and [mm]

FOA Modulator Package



For More Information, Contact: Sales@GoochandHousego.com www.goochandhousego.com

As part of our policy of continuous product improvement we reserve the right to change specifications at any time.