

FastReporter

NETWORK TESTING—OPTICAL



The one-stop solution for data post-processing and reporting productivity

- Consolidated management and reporting tool for all types of optical-layer testing: OTDR, ORL, loss, PMD and chromatic dispersion
- Most intuitive graphical user interface (GUI)
- Live templating for OTDR testing
- Powerful batch processing
- Faster-than-ever bidirectional batch analysis
- Automatic tool for duplicated measurement verification



www.EXFO.com

Telecom Test and Measurement

EXFO

EXPERTISE REACHING OUT

Optical Data Post-Processing: One Software Does It All

From handheld loss, ORL and OTDR testing to advanced optical characterization—including PMD and chromatic dispersion (CD)—the analysis of fiber-optic T&M data presents various challenges:

- A multitude of files to analyze
- The manual addition and removal of events in OTDR files
- The need to integrate different measurements in one report (OTDR, loss, ORL, CD and PMD)
- The customization of reports

EXFO's FastReporter software package provides you with the post-processing tools and functionalities you need to meet such challenges, whatever the application. Designed for **off-line analysis of field-acquired data**, FastReporter offers a user-friendly environment, which contributes to boosting productivity.

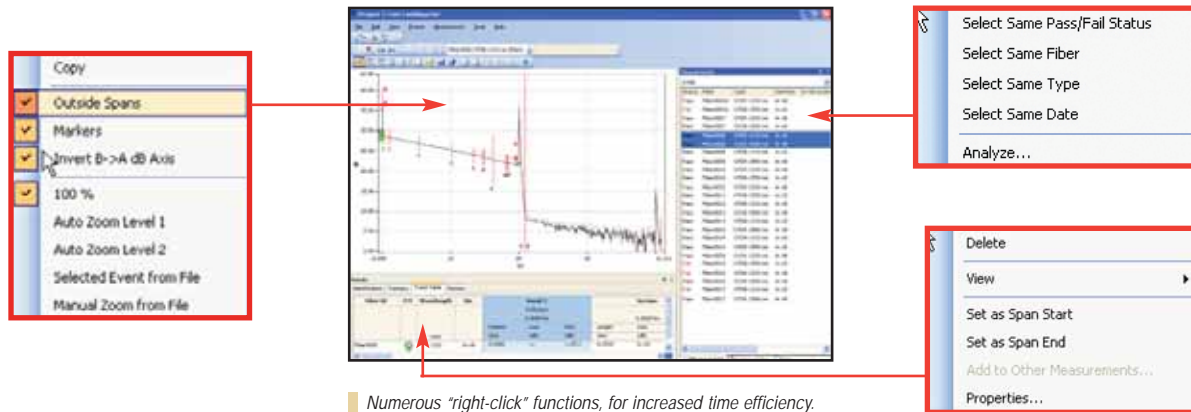
Out there in the field, data-processing efficiency is what you're looking for. Being able to rely on a single software to manage data and generate reports for all your optical-layer test applications is your solution to **true time efficiency** and **high productivity**.



User-Friendly Interface

Windows-Based Functions

Minimize the training time for your technicians, thanks to a familiar, highly intuitive software environment.



Numerous 'right-click' functions, for increased time efficiency.

Customizable View

Use the Pin icons to hide or restore the "Results" and "Measurements" sections of the screen, as seen on the right-hand examples.

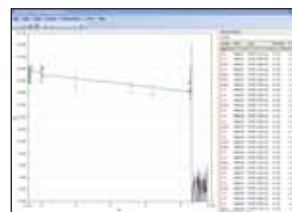


Graph, results and measurements.

Get a clearer view of your graphs and data by using the dual-monitor display feature.



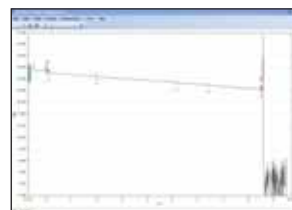
Use two monitors, one for the data, one for the graphic.



Graph and measurements.



Graph and results.



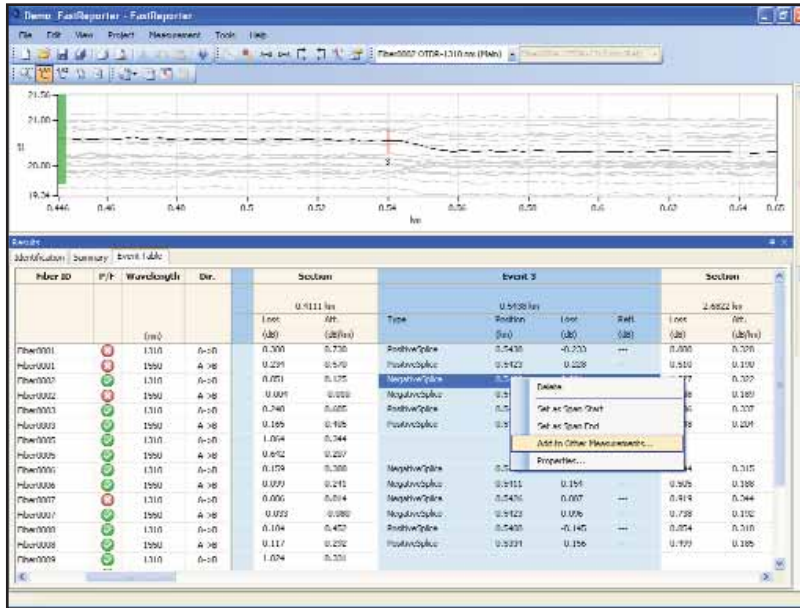
Graph only.

Live Templating for OTDR Testing

One-Step File Management at Any Wavelength

Keep full control: add/remove events manually

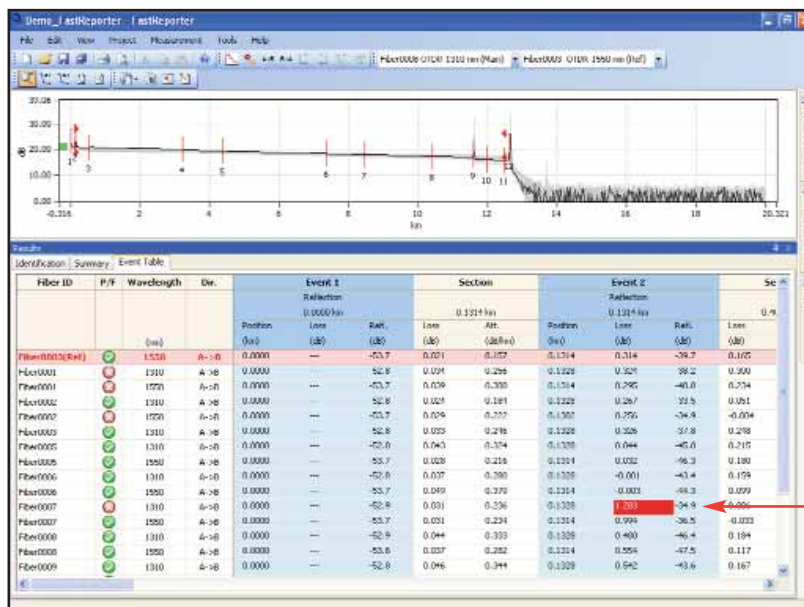
Add a specific event to all measurements selected at all wavelengths. Simply right-click on the event and select "Add to other measurements".



Manual file management.

Add/remove events automatically using a reference

All events from the reference will be added to all fibers. Standardize measurements for all fibers from a given cable—in just a few seconds.



Failed event (loss value) vs. set threshold.

Automated file management.

Powerful Batch Processing

FastReporter includes a powerful tool that **automates repetitive operations on large numbers of OTDR test files**. You can process an unlimited number of files in a session, and combine single operations into multi-operation batch sessions. In a nutshell, FastReporter optimizes your productivity.

■ **Batch documentation**

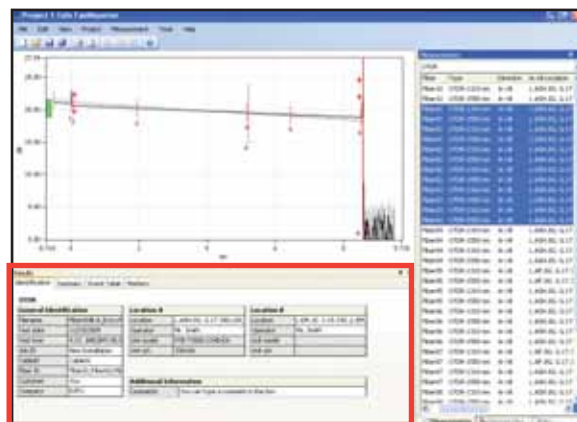
- Document an entire cable/project in a matter of seconds
- Save time in the field by documenting your files at the office
- Manage different measurements simultaneously

■ **Get uniformity in your results**

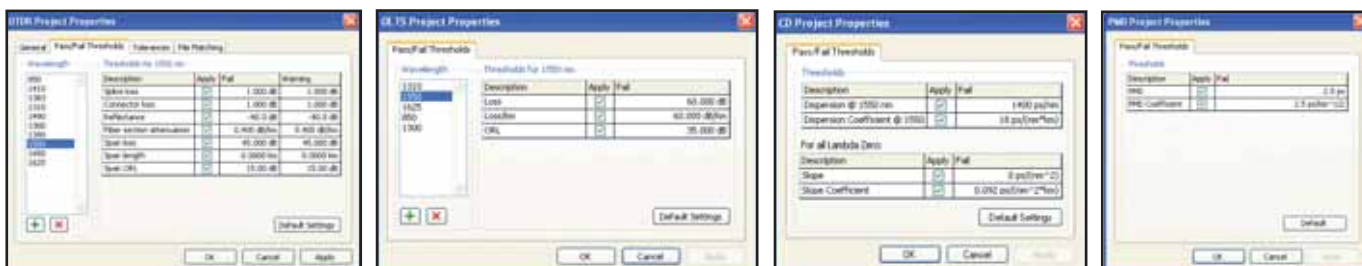
- Adjust cable and fiber parameters
- Set detection thresholds for all measurements at once

■ **Batch analysis**

- Adjust parameters for all cables at once
- Adjust detection thresholds
- Set pass/fail thresholds for **OTDR, OLTS, CD** and **PMD** testing and characterize your link. Make sure you meet the link's requirements.



■ Batch documentation.



■ **Universal OTDR file compatibility**

- Open files from other vendor's equipment
- Perform batch conversion of file formats



Bidirectional Batch Analysis

■ **Analyze an entire cable in two steps**

1. Set your direction (A to B, or B to A)
2. Create your bidirectional file

■ **Get all the needed info on a single screen**

View data for all events on all fibers, and at each wavelength



■ Bidirectional batch analysis.

Flexible Reporting

■ Various report templates to choose from

- ✓ Loss and ORL (including EXFO's FasTesT function)
- ✓ OTDR
- ✓ PMD
- ✓ Chromatic dispersion (CD)
- ✓ Fiber characterization
- ✓ Cable report

Fiber Characterization Report

General Information
Cable ID: Cable 012 Customer: Telecom Company Company: EXFO

Fiber Characterization

Fiber ID	Dispersion (ps/nm)	Conf. (ps/nm ² /km)	Delay (ps)	Conf. (ps/nm ² /km)	Wave Length (nm)	OLTS				OTDR				
						Loss A-B (dB)	Loss B-C (dB)	Average Loss (dB)	ORL A-B (dB)	ORL B-C (dB)	Length (km)	Length (ft)	Max Splice (dB)	Avg Splice (dB)
02	2033.54	16.84	0.50	0.04	1550	27.620	27.710	27.620	31.78	32.19	138.5950	138.6395	0.198	0.027
					1625	29.600	29.490	29.540	32.35	33.41	138.5950	138.6306	0.212	0.041
01	2341.23	16.89	0.34	0.03	1550	28.730	28.620	28.660	32.05	32.92	138.5460	138.5876	0.348	0.087
					1625	30.350	30.280	30.310	32.58	34.13	138.5460	138.5849	0.239	0.050
04	2327.21	16.79	0.44	0.04	1550	29.010	29.870	29.940	32.97	32.90	138.5370	138.5835	0.217	0.078
					1625	30.670	30.840	30.650	33.53	34.05	138.5370	138.5694	0.198	0.078
03	2328.92	16.61	0.61	0.05	1550	28.090	27.940	28.010	31.60	32.38	138.5370	138.5825	0.214	0.069
					1625	28.790	28.740	28.760	32.25	33.61	138.5370	138.5847	0.238	0.064

EXFO Signature: _____ Date: 3/6/2007 Page 1 of 1

■ Fiber characterization report.

OTDR Cable Report

Fiber ID	Loss		Reflection		Non-Reflection		Positive		Reflection	
	Loss (dB)	Loss (dB)	Loss (dB)	Loss (dB)	Loss (dB)	Loss (dB)	Loss (dB)	Loss (dB)	Loss (dB)	Loss (dB)
Fiber 01000000	30.7	0.01	30.2	0.01	0.00	0.00	0.00	0.00	0.00	30.4
Fiber 01000001	30.0	0.00	30.0	0.00	0.00	0.00	0.00	0.00	0.00	30.0
Fiber 01000002	30.7	0.00	30.0	0.01	0.00	0.00	0.00	0.00	0.00	30.0
Fiber 01000003	30.0	0.00	30.0	0.00	0.00	0.00	0.00	0.00	0.00	30.0
Fiber 01000004	30.7	0.00	30.0	0.00	0.00	0.00	0.00	0.00	0.00	30.0
Fiber 01000005	30.0	0.00	30.0	0.00	0.00	0.00	0.00	0.00	0.00	30.0
Fiber 01000006	30.7	0.00	30.0	0.00	0.00	0.00	0.00	0.00	0.00	30.0
Fiber 01000007	30.0	0.00	30.0	0.00	0.00	0.00	0.00	0.00	0.00	30.0
Fiber 01000008	30.7	0.00	30.0	0.00	0.00	0.00	0.00	0.00	0.00	30.0
Fiber 01000009	30.0	0.00	30.0	0.00	0.00	0.00	0.00	0.00	0.00	30.0
Max	30.7	0.00	30.0	0.00	0.00	0.00	0.00	0.00	0.00	30.0

EXFO Signature: _____ Date: 3/6/2007 Page 1 of 1

■ OTDR cable report.

One cable report replaces hundreds of single-fiber test printouts, simplifying and speeding up high-fiber-count data management. This report automatically provides per-event and per-fiber statistics and flags threshold-exceeding values. It also generates end-to-end reports for one or many wavelengths.

■ Report customization

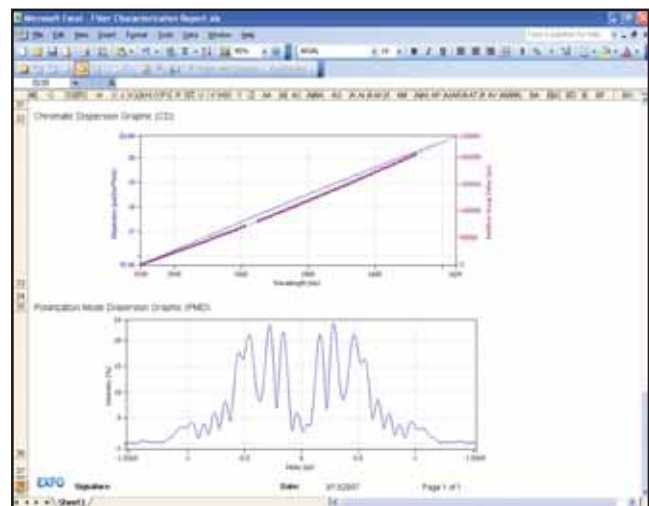
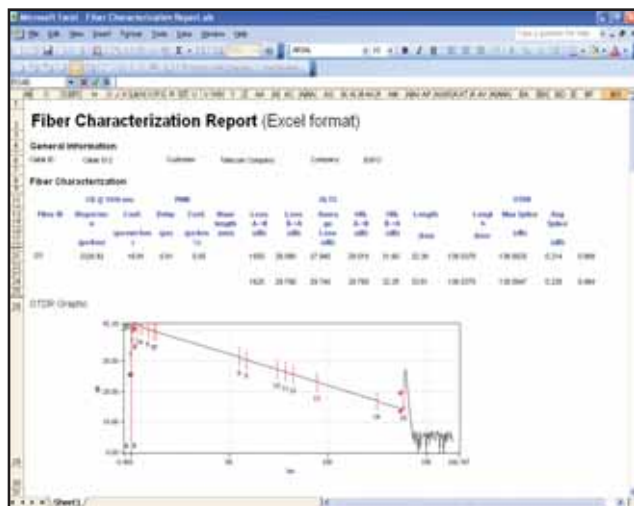
Create your own report template with external reporting software such as Crystal Reports®.

■ Format saving

Easily create comprehensive PDF, Excel or HTML reports, with no additional formatting.

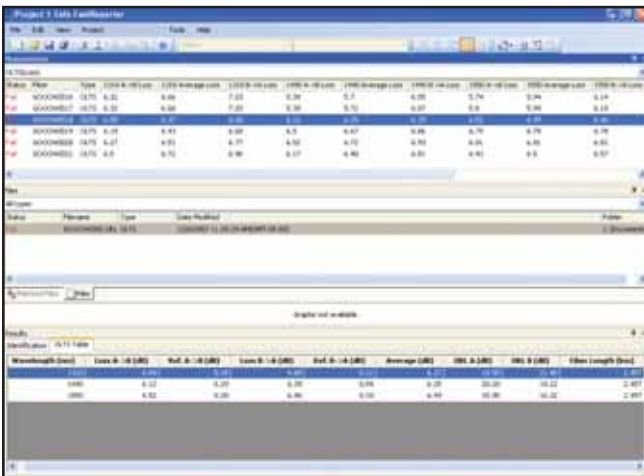
■ Copy Graph function

Customize your reports by integrating your graphs into documents such as Excel, Word, etc.

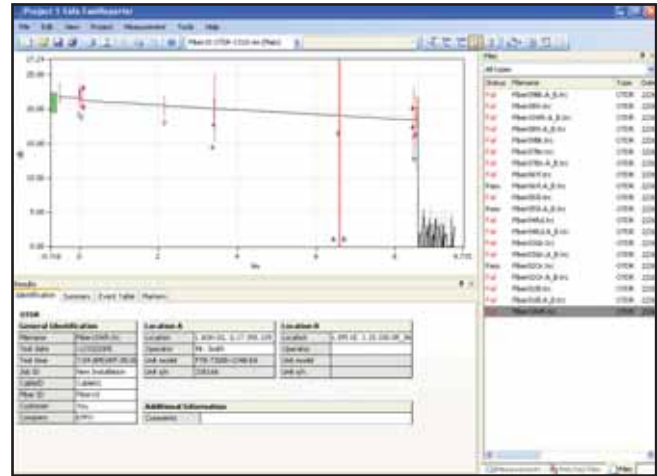


Compatible with Various EXFO Test Instruments

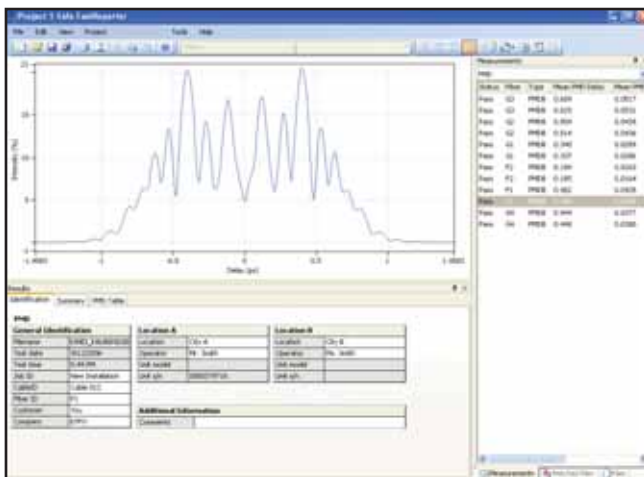
FastReporter processes optical test data collected from the FTB-400 and FTB-200 platforms (FTB modules), as well as from handheld units.



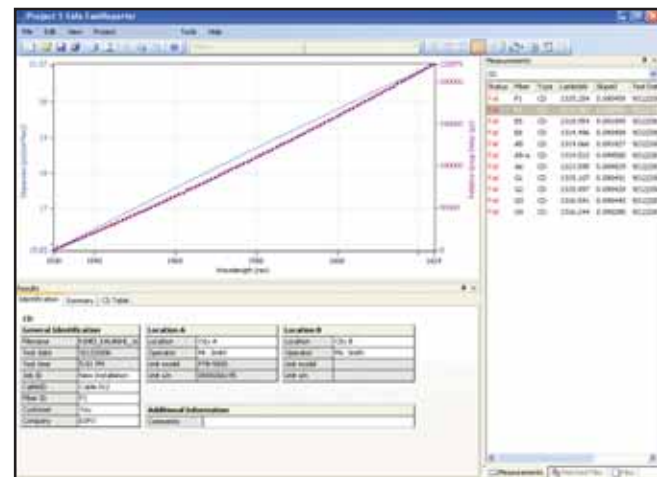
OLTS results (FOT-930, FTB-3930)



OTDR results (FTB-7000 series)



PMD results (FTB-5500B)



CD results (FTB-5800)

SYSTEM REQUIREMENTS

Operating System	Windows 2000	Windows XP	Windows Vista*
Processor	Pentium PC (800 MHz or higher recommended)	Pentium PC (1.6 GHz or higher recommended)	Pentium PC (1.6 GHz or higher recommended)
RAM	256 MB (512 MB recommended)	256 MB (1 GB recommended)	512 MB (2 GB recommended)
Disk space	400 MB		
Monitor	One super VGA (800 X 600) monitor (two 1024 X 768 monitors recommended)		
Other requirements	<ul style="list-style-type: none"> • Network adapter • Microsoft Internet Explorer version 6.0 or later • Microsoft 2000 or later to open .xls files • .NET Framework 2.0 SP1 		

* 32-Bit

ORDERING INFORMATION

FastReporter-X

Model ■

- FastReporter-A = English
- FastReporter-C = Chinese (simplified)
- FastReporter-F = French
- FastReporter-G = German
- FastReporter-R = Russian
- FastReporter-E = Spanish

EXFO Corporate Headquarters > 400 Godin Avenue, Quebec City (Quebec) G1M 2K2 CANADA | Tel.: 1 418 683-0211 | Fax: 1 418 683-2170 | info@EXFO.com

Toll-free: 1 800 663-3936 (USA and Canada) | www.EXFO.com

EXFO America	3701 Plano Parkway, Suite 160 Plano, TX 75075 USA	Tel.: 1 800 663-3936	Fax: 1 972 836-0164
EXFO Europe	Omega Enterprise Park, Electron Way Chandlers Ford, Hampshire SO53 4SE ENGLAND	Tel.: +44 2380 246810	Fax: +44 2380 246801
EXFO Asia	151 Chin Swee Road, #03-29 Manhattan House SINGAPORE 169876	Tel.: +65 6333 8241	Fax: +65 6333 8242
EXFO China	No. 88 Fuhua, First Road, Central Tower, Room 801 Futian District Beijing New Century Hotel Office Tower, Room 1754-1755 No. 6 Southern Capital Gym Road	Shenzhen 518048 P. R. CHINA Beijing 100044 P. R. CHINA	Tel.: +86 (755) 8203 2300 Tel.: +86 (10) 6849 2738 Fax: +86 (755) 8203 2306 Fax: +86 (10) 6849 2662

EXFO is certified ISO 9001 and attests to the quality of these products. This device complies with Part 15 of the FCC Rules. Operation is subject to the following two conditions: (1) this device may not cause harmful interference, and (2) this device must accept any interference received, including interference that may cause undesired operation. EXFO has made every effort to ensure that the information contained in this specification sheet is accurate. However, we accept no responsibility for any errors or omissions, and we reserve the right to modify design, characteristics and products at any time without obligation. Units of measurement in this document conform to SI standards and practices. In addition, all of EXFO's manufactured products are compliant with the European Unions WEEE directive. For more information, please visit www.EXFO.com/recycle. Contact EXFO for prices and availability or to obtain the phone number of your local EXFO distributor.

For the most recent version of this spec sheet, please go to the EXFO website at <http://www.EXFO.com/specs>
In case of discrepancy, the Web version takes precedence over any printed literature.