

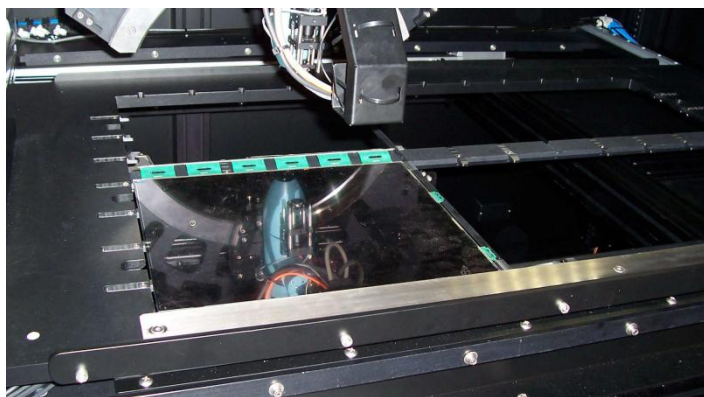
AxoScan PanelMapper™ APM-60H

Simultaneously Measure All Key LC Cell Parameters

The AxoScan Panel Mapper is the most advanced polarization measurement system available. The system can measure LCD panels and polarizer films in sizes up to 60". The system can measure every possible polarization property of a sample, including:

- Simultaneously measure cell gap, rubbing direction, twist, and pre-tilt
- Retardance magnitude and orientation
- Optical rotation / Circular retardance
- Polarizer transmission axis orientation and polarizer efficiency
- Circular dichroism
- Percent transmittance
- Depolarizing effects
- Complete Mueller matrix

Full XY maps of any parameter can be produced quickly and easily.



The adjustable sample holder accommodates panels up to 60" diagonal



The AxoScan APM-60H PanelMapper

Key Features

- High-speed measurements. Complete data set can be acquired in under 5 seconds
- The polarimeter heads tilt by +/- 50°, with rotation to any angle (+/- 90°)
- Holds up to 60" LC panels
- Optional vacuum chuck to mount polarizer and compensation films
- Optional vision alignment system to compensate for loading angle errors
- Optional Multi-Layer Software Package to determine the optical properties of individual layers
- Optional Panel Heater to heat samples while measurements are performed
- Optional Frequency Response Tester and Cholesteric Software

