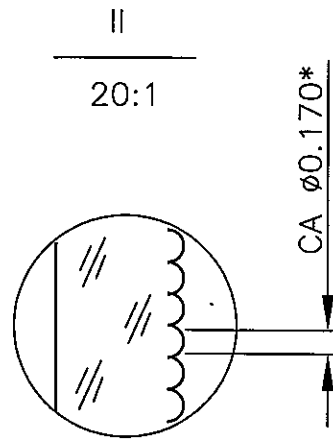
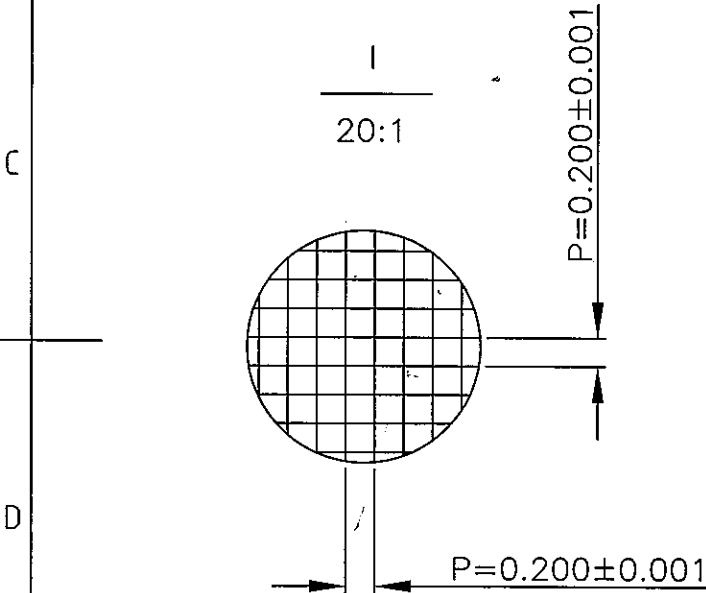
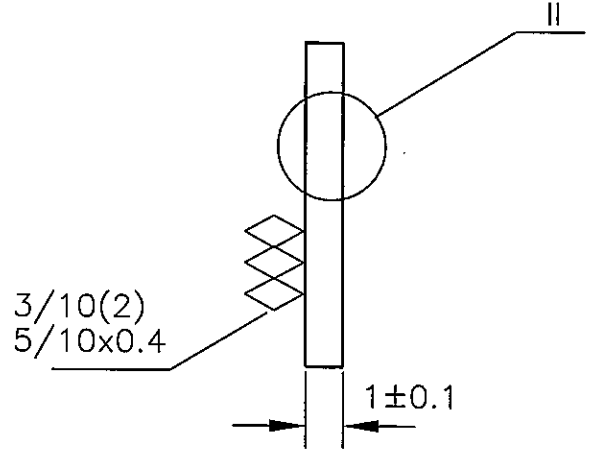
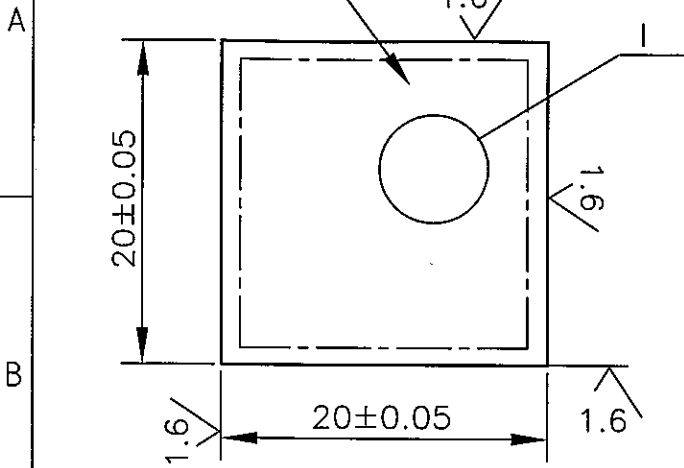


Schub Hartman

controlling area 19.6x19.6

Schub-Hartman Array

Rz0.1 / (✓) (✓)



1. *Info value
2. Focal length 22.0mm±3% @633nm
3. Defects outside the controlling area are not defined
4. Chamfer 0.1–0.3mm

				FS.36.247		Massstab 2:1		Werkstoff	
						Fused silica S01E			
				Datum		Name			
				Bearb. 07.02.06		APO-Q-P200-F22(633)			
				Gepr.					
				Norm					
				[ams]		advanced microoptic systems gmbh		Blatt	
								Bl.	
Zust		Anderung		Datum		Name (Urspr.)		(Ers. f.:)	
								(Ers. d.):	